



MOTT RAPID SHIP

...WHEN TIMING IS EVERYTHING

**LABORATORY FURNITURE
AND FUME HOODS**

Corporate Headquarters - 452 Hardy Rd, Brantford ON, Canada N3T 5L8 T.519.752.7825

www.mott.ca

Ships Within 15 Business Days Or Less

Whether you're revamping or moving into a new lab space, the Mott Rapid Ship (MRS) program offers products to transform your lab spaces in no time. Our products are finished with our environmentally friendly, long-lasting VOC free powder coat finish that meets or exceeds all SEFA 8 standards. Products are available in Bright White.

Our skilled dealers can assist with the design, planning and installation of your lab. They are available to answer your questions and help you choose the best solution for your space.

This catalog represents our essential product offerings, items are available to ship anywhere inside North America within 15 business days or less.

Our dealers can provide other lab related accessory items such as: plumbing and electrical fixtures, eyewash stations, table accessories, chairs, sinks, additional work surfaces and more.

Customized cabinets, tables, benches, and fume hoods are available, but will require longer lead times. Large quantity orders may be subject to longer lead times. Your local Mott dealer will be able to address ship dates for custom or large orders.

Contact your local Mott dealer today to get started!

CABINET CONSTRUCTION

Construction style: Inset steel

Hardware: Brushed aluminum wire pull (Option 68) and stainless steel five knuckle hinges (Option 23)

Drawers: 100 lb. full extension ball bearing drawer slides

Shelves: Adjustable in ½" increments

Leveling Method: Adjustable leveling feet

Color: All MRS products are offered in Bright White (#693226)

Industry Compliance: SEFA 8

BASE CABINETS

Door Units



Width	Item Number
36"	1410011
• 34-3/4" high, 22" deep.	
• 1 adjustable shelf.	

Door/Drawer Units



Width	Right Hinged	Left Hinged	# of Doors
18"	1110022	1110222	1
24"	1210022	1210222	1
30"	1310022	-	2
36"	1410022	-	2
48"	1510022	-	2

- 34-3/4" high, 22" deep.
- 1 adjustable shelf.
- Left hinge cabinet shown - Right hinge reverse of what is shown.

Drawer Units



Width	Item Number
18"	1110044
24"	1210044
• 34-3/4" high, 22" deep.	

SINK CABINETS

Sink Units



Width	Item Number
36"	1418022
48"	1518022
• 34-3/4" high, 22" deep.	
• Sink base bottoms are powder coated galvanized steel.	

Sink Support Kit



Item Number
SSK1036
• Metal frame to support and position an under mount sink.

SUSPENDED CABINETS

Door/Drawer Suspended Units



Width	Item Number
18"	1150022
24"	1250022

- Suspended door/drawer cabinets are 24" high, 22" deep.
- 1 adjustable shelf.
- Add option code 15 to order a finished back on these units.

File Drawer Suspended Units



Width	Item Number
18"	1150177

- Suspended file drawer cabinets are 24" high, 22" deep.
- Add option code 15 to order a finished back on these units.
- Bottom drawer only holds files.

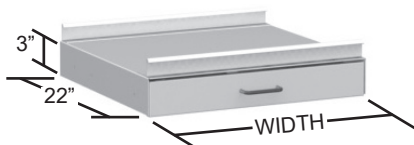
Drawer Suspended Units



Width	Item Number
15"	1950044
18"	1150044
24"	1250044

- Suspended file drawer cabinets are 24" high, 22" deep.
- Add option code 15 to order a finished back on these units.

Pencil Drawers



Width	Item Number
20"	PEN0020

- Pencil drawer suspends from tables with hanging rails.
- Drawer on pencil drawer is supplied with full extension runners.

WALL CABINETS

Hinged Framed Glass Door Units



Width	Item Number	# of Doors
18"	5110030	1
30"	5310030	2
36"	5410030	2

- 30" high, 14" deep.
- 2 adjustable shelves.

Hinged Door Units



Width	Item Number	# of Doors
18"	5110060	1
30"	5310060	2
36"	5410060	2

- 30" high, 14" deep.
- 1 adjustable shelf.

SPECIALTY CABINETS

Acid Storage Units



24" wide

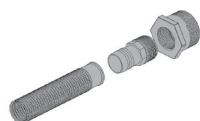


30" and wider

Width	Right Hinged	Left Hinged	# of Doors
24"	1231011	1231211	1
30"	1331011	-	2
36"	1431011	-	2
48"	1531011	-	2

- Acid cabinets are 34-3/4" high, 18" deep (single door left hinged unit shown).
- Acid cabinets are lined with a chemically resistant molded polyethylene liner. Removable liner is held in place with capped stainless steel screws and has a vent connection.
- Cabinet has one chemical resistant phenolic shelf.
- Cabinets are marked "ACID" - in red letters.
- Note: Acid cabinets must be vented. Mott recommends venting acid cabinets with a Polyolefin Vent Kit (PVSS).

Polyolefin Vent Sets


 Item Number
 PVSS

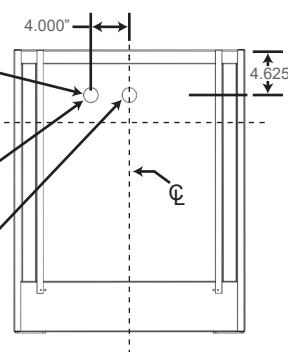
- Polyolefin Vent sets are for venting Acid Storage units (Not recommended for flammable storage cabinets).
- Flexible corrugated vent tube is eight feet long and comes with fitting to attached to rear of cabinet.

Acid Cabinet Rear View

2" DIA Female National Pipe Thread vent connection on cabinets with Molded Tub Liners and 1-1/2" Plain Hole on cabinets with FRP Liners.

Vent hole location for all SINGLE DOOR Acid Cabinets

Vent hole location for all DOUBLE DOOR Acid Cabinets



Insulated Solvent Units



24" wide



30" and wider



Note: Fire code does not require Solvent Cabinets to be vented. Do not vent Solvent Cabinets to fume hood. If cabinet must be vented use fireproof pipe. Contact Mott for Details.

Width	Right Hinged	Left Hinged	# of Doors
24"	1232011	1232111	1
30"	1332011	-	2
36"	1432011	-	2
48"	1532011	-	2

- Insulated Solvent Units are 34-3/4" high, 18" deep (single door right hinged unit shown).
- Fabricated with a 2" insulated double wall and are approved to UL 1275, and meet National Fire Protection Association standards.
- The floor of the cabinet has a 2" deep liquid tight spill containment pan.
- Doors are mounted on continuous hinges with a three point locking self latching handle. Optional self closing doors are also available.
- Each cabinet has two 2" diameter vents in the rear of the cabinet, complete with flame arrestor and vent covers.
- Each cabinet had one powder coated steel shelf.
- Cabinets are marked "FLAMMABLE KEEP FIRE AWAY" - in red letters.

Self Closing Kits

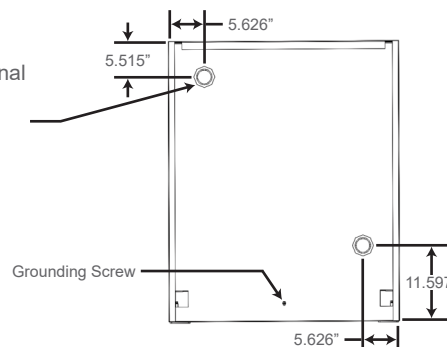


Description	Item Number
For a 36" wide Solvent Cabinet	SCK0036
For a 48" wide Solvent Cabinet	SCK0048

- Self Closing Kits for Solvent Cabinets require field installation.

Solvent Cabinet Rear View

2" DIA Female National Pipe Thread in two places as shown



SPECIALTY CABINETS

Pump Storage Units



Width	Right Hinged	Left Hinged	# of Doors
18"	113P011	113P211	1

- Pump Storage Cabinets with full doors are insulated with sound absorption foam for noise reduction.
- Pump hose connection and 120V/20amp, (15amp in Canada) duplex receptacle is located on the rear of the cabinet and includes 8 feet of electrical whip. Duplex and cover plate are black.
- These units include a pull-out tray and removable access panel at the back of the cabinet.
- Right hinged cabinet shown.

MISCELLANEOUS ITEMS

Front Filler Scribes



Width	Right Hand	Left Hand
4"	FFR1004	FFL1004
14"	FFR1014	FFL1014

- The Front Filler Scribe is used to close a space between a base cabinet and a wall.
- A double angle is provided to enclose the raw edge of the panel.
- 34-3/4" standing height.
- Right hand shown, left hand reverse of what is shown.

Item Number

9900001

- Toe space filler required for corner applications.

End Cover Panel Scribes



Width	Item Number
1"	ECS1001
7"	ECS1004
11"	ECS1010
12"	ECS100A
14"	ECS100B

- The End Cover Panel Scribes are used to close spaces between the back of a base cabinet and a wall. The Scribe feature allows for easy width adjustment in the field.
- 34-3/4", standing height.

Front Wall Filler Scribes - 14" Deep



Width	30" High
1"	WFS6301
6"	WFS6306
15"	WFS6315

- The Wall Filler Scribe is used to close a space between a wall cabinet and a wall. It can be cut to fit gaps of various sizes.
- A double angle is provided to enclose the raw edge of the panel.

MISCELLANEOUS ITEMS

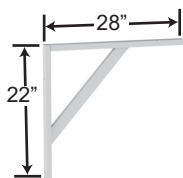
Gable Legs



Width	Item Number
22"	GLS1022
29"	GLS1029

- Gable Legs are used to support wall counter tops or aprons where base cabinets are not required.
- Gable Legs come complete with wall mounting channel.
- 1-1/2" wide, 34-3/4" high.

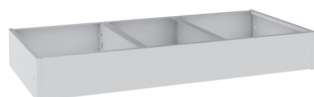
Under Counter Support Brackets



Item Number
CBS0001

- Under Counter Support Brackets are used to support counter tops.
- Suitable for 30" deep counter tops.
- Supports are 22" high by 28" deep welded from 1" x 2" 16 gauge steel tube.

Apron Units



Width	Plain Front (no drawers)
30"	AUC0130
36"	AUC0136

- Aprons provide a work area from a seated position.
- 3-3/4" high by 22" deep, three piece adjustable construction.

Apron Service Covers



Width	Item Number
30"	SCP3030
36"	SCP3036

- Apron Service Cover panels are used to conceal open spaces and services below aprons.
- Attaches to adjacent cabinets and meets the bottom of the apron.
- Assembly includes single angles for attachment to adjacent cabinets. Upper panel is removable to allow access to the service. The lower panel stays fixed in order to apply the coved base and overlapping the lower and upper panel allows to accommodate for uneven floors.

Front Rails



Width	Item Number
30"	FRA0030
36"	FRA0036

- Front Rails are commonly used to finish a space at a sitting area.
- They are used when a full frame apron is not required.
- 3-3/4" high.

Front Rail Service Covers



Width	34-3/4" High	28-3/4" High
30"	SCP1030	SCP2030
36"	SCP1036	SCP2036

- Front Rail Service Cover panels are used to conceal open spaces and services behind front rails.
- Attaches to adjacent cabinets and meets the bottom of the work surface.
- Assembly includes single angles for attachment to adjacent cabinets. Upper panel is removable to allow access to the services. The lower panel stays fixed in order to apply the coved base and overlapping the lower and upper panel allows to accommodate for uneven floors.

MISCELLANEOUS ITEMS

Wall Pilasters



Height	Double Slotted
36"	WPA0036
<ul style="list-style-type: none"> Pilasters only suitable for "SBP" shelf brackets. 1-5/8" wide, 13/16" deep. Pilasters are adjustable in 1" increments. Fastens to wall to give support structure where no services are required. Ensure wall is of sufficient strength to support intended load (significant blocking required). 	

Shelf Brackets For Wall Pilasters



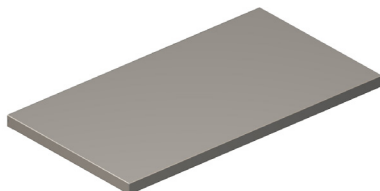
Depth	Item Number
12"	SBP0012
<ul style="list-style-type: none"> Brackets only suitable for "WPA" wall pilasters. Pair of shelf brackets are 6" high. 	

Inverted Shelf Brackets For Wall Pilasters



Depth	Item Number
12"	SBP1012
<ul style="list-style-type: none"> Brackets only suitable for "WPA" wall pilasters. Pair of shelf brackets are 4-1/4" high. 	

Steel Shelves For Wall Pilasters



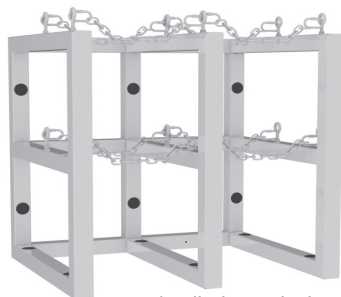
Width	12" Depth
36"	SHL1236
<ul style="list-style-type: none"> Shelves are actual widths Shelves suitable for "SBP" shelf brackets. 	

Cylinder Storage Racks



2 cylinder rack shown

Width	Item Number	Capable of Holding
30"	CSR1230	2 Cylinders
44"	CSR1344	3 Cylinders
<ul style="list-style-type: none"> One cylinder deep storage rack. Holds up to 10" diameter cylinders. Welded steel rack 30"high x 16"deep. Secure to both walls and floor with 1/2" steel anchor bolts. Non-kink zinc plated chain. 		

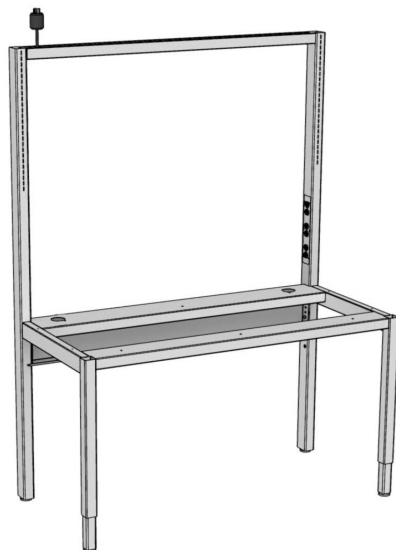


4 cylinder rack shown

Width	Item Number	Capable of Holding
30"	CSR2230	4 Cylinders
44"	CSR2344	6 Cylinders
58"	CSR2458	8 Cylinders
72"	CSR2572	10 Cylinders
<ul style="list-style-type: none"> Two cylinder deep storage rack. Holds up to 10" diameter cylinders. Welded steel rack 30"high x 26"deep. Secure to both walls and floor with 1/2" steel anchor bolts. Non-kink zinc plated chain. 		

ALTUS™ TABLE SYSTEM

Assembly



Width	29" Deep
48"	ATS2948
60"	ATS2960
72"	ATS2972

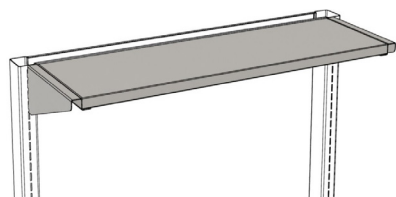
- Overall assembly is 84" high, 2" X 3" deep rear posts, 2" square tubular front legs with leveling feet. Table frame is an all-welded construction. Table frame is height adjustable in 1" increments from 29" to 36" (work surface not included).
- Complete with hanging rails to suspend lower cabinets.
- Standard depth hanging cabinets are not suitable for 23" deep tables.
- A maximum of three fixtures are available on the plumbing post (must be ordered separately).
- Three duplex electrical receptacles are standard on side electrical post.
- Overall depth of assembly does not include work surface.
- Shipped partially assembled.

TYPICAL ELECTRICAL PLUG DETAIL

Tables are typically equipped with NEMA L5-20P locking plugs. Each assembly is supplied with 4 feet of white electrical cord. Requires one 120V, 20A circuits.



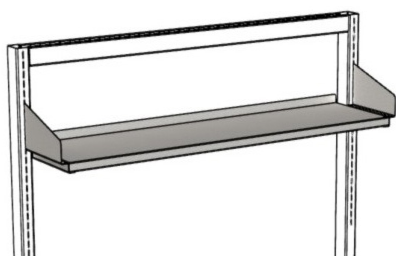
Top Steel Shelf Assemblies



Width	Tapered Profile
48"	AAS1248
60"	AAS1260
72"	AAS1272

- Assembly includes one 1" thick 12" deep shelf and a pair of 12" deep brackets. Suitable for Altus™ only.
- Shelves are adjustable in 1" increments.

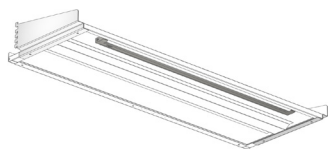
Steel Shelf Assemblies



Width	Item Number
48"	SAA1248
60"	SAA1260
72"	SAA1272

- Assembly includes one 1" thick shelf, one rear shelf angle, one 12" deep shelf and a pair of brackets. (9" brackets for 12" deep assembly). Suitable for Altus™ only.
- Shelves are adjustable in 1" increments.

Under Mount Shelf Task Lights



- Order light a minimum 6" shorter than the shelf.
- Low profile (.98" wide by 1.65" high) T5 fluorescent task light mounts to underside of the shelf.
- Shatterproof polycarbonate lens protects the lamp.
- Easily linkable in one continuous line using Flexible connectors.
- 6" Flexible Connector comes standard with each light.
- See below to order longer Flexible Connectors.
- On-off rocker switch located on the side of the fixture.
- 8000 hour, cool white replaceable T5 lamp included.
- UL listed.
- Ships loose, includes Mott's mounting brackets.

Length of Light	Item Number
37"	TLW0037
49"	TLW0049
60"	TLW0060

ALTUS™ TABLE SYSTEM

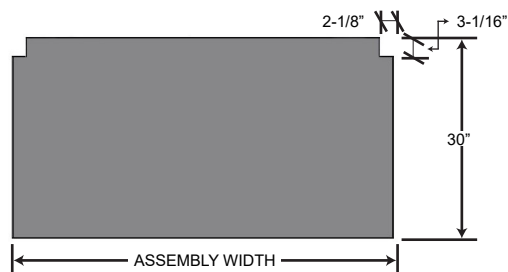
Four Leg Table



Width	No Casters	With Casters
48"	ATF2848	ATF2848-97
60"	ATF2860	ATF2860-97
72"	ATF2872	ATF2872-97

- Table frame is 28" deep, with an all-welded construction. 2" square tubular legs with leveling feet. Table frame is height adjustable in 1" increments from 29" to 36" (work surface not included).
- Table frame complete with hanging rails to suspend lower cabinets.
- Altus™ table with casters is supplied with leveling casters, side and rear supports.
- Shipped assembled.

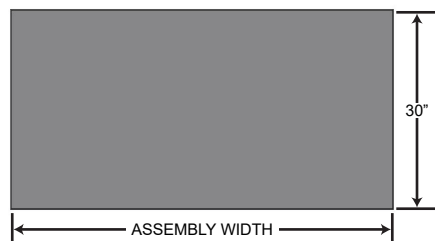
Work Surfaces for 29" Deep Units



Width	Black Phenolic	Black Epoxy
48"	PAL3048	EAL3048
60"	PAL3060	EAL3060
72"	PAL3072	EAL3072

- 1" thick black phenolic resin or black epoxy with 1/8" (3mm) beveled edges (Note: cutouts for uprights are not beveled).
- 1" overhang at front.

Work Surfaces for Four Leg Table Units



Width	Black Phenolic	Black Epoxy
48"	PAT3048	EAT3048
60"	PAT3060	EAT3060
72"	PAT3072	EAT3072

- 1" thick black phenolic resin or black epoxy with 1/8" (3mm) beveled edges (Note: cutouts for uprights are not beveled).
- 1" overhang at front.

ALTUS™ TABLE SYSTEM

Service Assemblies

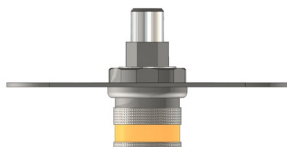


The customer is responsible for ensuring that internal piping and components meet local codes and standards. In some jurisdictions on-site inspection and testing may be required, this service is not provided by Mott Manufacturing.

Service	Band Color	White Hose	Stainless Steel
AIR	ORANGE	ASAPAIR	-
ARG	VIOLET	ASAPARG	-
CW	GREEN	ASAPCWT	-
GAS	BLUE	-	ASASGAS
HE	BLACK	ASAPHEL	-
NIT	BROWN	ASAPNIT	-
VAC	YELLOW	ASAPVAC	-

- These parts are shipped loose.
- Assembly complete with panel mounted single service fixture (Needle Valve supplied, Note: * Cold Water is supplied with ball valve), keyed quick connect plug and hose.
- Corrugated gas appliance connector with stainless steel keyed quick connect is supplied for burning gas.
- These assemblies are only suitable for the Altus™ Tables.
- Supplied with 4 feet of service lines above table height.
- Only plug and body quick connects of the same color will couple and allow flow.
- Fixtures may not be exactly as shown.
- Epoxy coated fixtures.

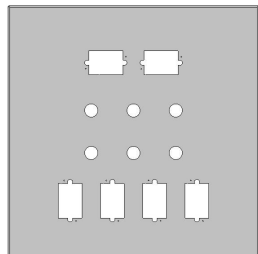
Female Ceiling Quick Connect Fittings



Service	Band Color	Item Number
AIR	Orange	MCPVAIR
ARG	Violet	MCPVARG
CW	Green	MCPVCWT
GAS	Blue	MCPVGAS
HE	Black	MCPVHEL
NIT	Brown	MCPVNIT
VAC	Yellow	MCPVVAC

- These parts are shipped loose.
- A panel mounted stainless steel keyed quick connect body is suitable for panel mounting on overhead service carriers and Ceiling Service Panels with stainless steel hoses.
- A panel mounted brass keyed quick connect body is suitable for panel mounting on overhead service carriers and Ceiling Service Panels with Straight hoses.
- Complete with 3/8" NPT inlet.
- Only plug and body quick connects of the same color will couple and allow flow.

Ceiling Service Panels



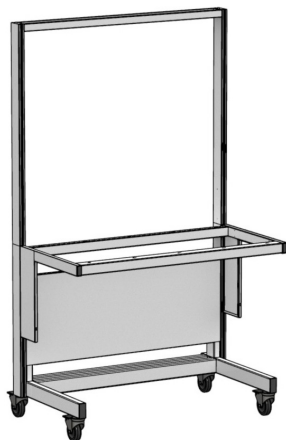
Item Number

OSP0002

- Powder coated steel panel takes the place of a standard ceiling tile.
- Offers the ability to mount and disconnect quick connect service fixtures, electrical and data outlets.
- Dimension 23-3/4" x 23-3/4".
- Six service access holes and six electrical cutouts. Custom configurations available, contact Mott for details. Fixtures must be ordered separately.
- Panel is compatible with most T grid acoustical suspended ceiling structures.

SIGMA CARTS™

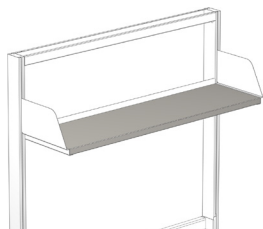
Full Height Cart Assembly



Width	Item Number
48"	MWS1048
60"	MWS1060
72"	MWS1072

- One piece full height cart assembly is 78" high and comes complete with cantilevered table frame, height adjustable in 1" increments (work surface is not included).
- Overall depth of cart is 30" deep with a 23" deep table frame.
- Shelves can be installed above and below work surface (accepts standard Sigma Cart™ shelves).
- Hanging rails are included on table frame to suspend lower cabinets.
- Total lock steel swivel casters.
- Shipped assembled.

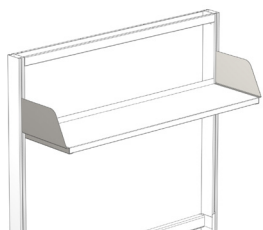
Sigma Cart™ Shelves



Width	Item Number
48"	FSH1248
60"	FSH1260
72"	FSH1272

- 12" deep shelf suitable for any Sigma Cart™.
- Attach to shelf brackets with screws (screws not included).
- Nominal widths.

Sigma Cart™ Shelf Brackets



Width	Item Number
48"	FSB0012

- Pair of 12" deep steel end brackets designed to fit Sigma Cart™ shelves.
- Adjustable in 1" increments.
- Brackets only compatible with Sigma Cart™.

Work Surfaces

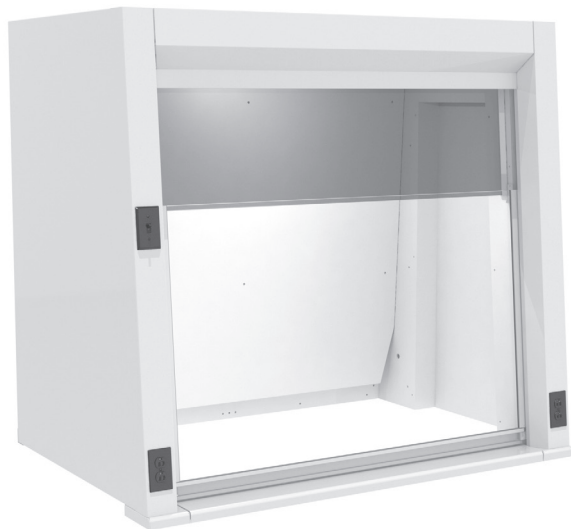


Width	Black Phenolic	Black Epoxy
48"	PSC3048	ESC3048
60"	PSC3060	ESC3060
72"	PSC3072	ESC3072

- 1" thick black phenolic resin or black epoxy with 1/8" (3mm) beveled edges (Note: cutouts for uprights are not beveled).
- 1" overhang on front.

NOVAGUARD™ BENCH FUME HOOD - VERTICAL SASH

Designed to deliver competitive containment performance and energy efficiency. The NovaGuard™ operates with exhaust volumes significantly lower than conventional hoods. Providing the operator with a secure and reliable operation environment while providing considerable capital and operating cost savings. Suitable for Constant Air Volume (CAV) and Variable Air Volume (VAV) requirements. The NovaGuard™ bench mounted fume hood is supplied with the following standard features:



Face Velocities - Tested to both standard and modified ASHRAE procedures at face velocities as low as 50 fpm fully open.

Baffle Design - Downflow rear baffle is biased to the bottom, drawing fumes downward away from the user and counteracts the normal upward flow of vapors and prevents contaminated air build up behind the closed sash.

Exhaust System - Suitable for use in either Variable Volume or Constant Volume applications.

Chain Drive Sash - Chain and sprocket mechanism that delivers the easiest and most reliable sash operation available with an exceptionally long life span.

Full Viewing Area - Provides a clear and unobstructed side to side view of fume hood interior, with a 44-1/2" high viewing area. Rear mounted fixed tinted visor included.

Self-Lowering Sash System - Sash latch temporarily secures the sash in the full open position for setup and tear down operations. When the lock is freed, the sash automatically returns to the 18" open operational position which offers extra

protection to the operator and helps reduce energy consumption. Below 18" the sash is equally balanced.

Flush Airfoil - Low-profile, hinged, type 316 powder coated stainless steel airfoil is flush with the work surface to provide ergonomic and unobstructed access to the interior. The integral spill trough is designed to provide secondary containment in the event a spill escapes the primary containment work top. Power cords can be run through the sill to the electrical outlets on the hood posts.

Spill Trough - Designed to provide secondary containment in the event a spill escapes the primary containment work top.

Electrical and Plumbing - Two UL/CSA approved duplex receptacles provided for 120 volt service. Built-in LED lighting and a corner post mounted UL/CSA approved switch provided. Fixture holes are not pre-punched and punched only as ordered (front post can accept five front load fixtures per side). Factory pre-plumbing is an available option as well as plumbing fixtures from a variety of manufacturers to meet most plumbing needs.

Removable Panels - Side panels are easily removed to access interior electrical or plumbing fixtures.

Stainless Steel Exhaust Collar - Wide rectangular exhaust duct connection improves airflow distribution across hood width.

Agency Approvals - UL 1805 Classified, CSA certified to UL 61010 and tested in accordance with ASHRAE 110-2016. Test results available upon request.

Vertical Raising Sash (Chain & Sprocket Sash System)

Width	Item Number
48"	72A1040
60"	73A1040
72"	74A1040

Exhaust Transition

Width	Item Number	Duct Size
48"	EXT0036	10"
60"	EXT0036	10"
72"	EXT0036	10"

Exhaust Transition

- Fits over exhaust collar on NovaGuard™ hoods.
- Exhaust transitions (rectangular duct to round duct) are available in 18 gauge, type 316 stainless steel and fits over exhaust collar.
- Base size 3" x 36".

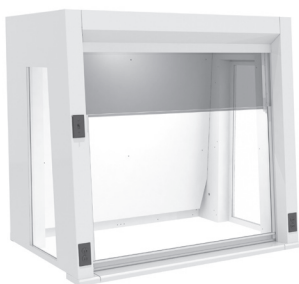
NOVAGUARD™ BENCH FUME HOOD - VERTICAL SASH

Exhaust Parameters

Hood Size	Duct Diameter	80 FPM 18" Max		80 FPM 28-1/2" Max*		60 FPM 18" Max		60 FPM 28-1/2" Max*		50 FPM 18" Max		50 FPM 28-1/2" Max*	
		Sash Opening CFM	SP**	Sash Opening CFM	SP**	Sash Opening CFM	SP**	Sash Opening CFM	SP**	Sash Opening CFM	SP**	Sash Opening CFM	SP**
48"	3 x 36"	385	0.05	610	0.07	289	0.04	457	0.06	241	0.03	381	0.05
60"	3 x 36"	505	0.05	800	0.11	379	0.04	600	0.06	361	0.03	500	0.05
72"	3 x 36"	625	0.07	990	0.17	469	0.04	742	0.10	391	0.03	618	0.07

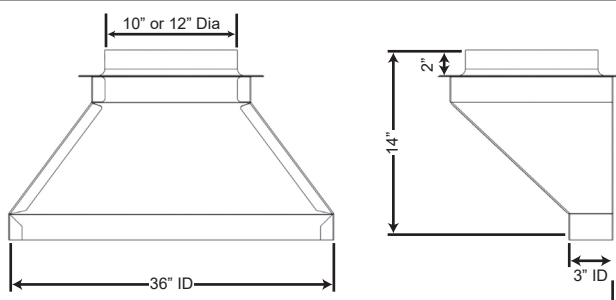
* 28-1/2" max sash opening is recommended for set-up and tear down only.
** Does not include transition.

Side Window Option

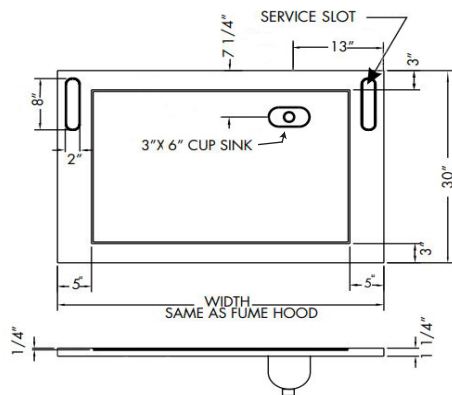


- WL** - Glass end panels on left side replaces solid end panel on left.
- WR** - Glass end panel on right side - replaces solid end panel on right.
- WB** - Glass end panels on both sides - replaces both solid end panels.

Optional Exhaust Transition Details



NovaGuard™ Work Surfaces



Width	Black Phenolic	Black Epoxy
48"	PFR3048	EFR3048
60"	PFR3060	EFR3060
72"	PFR3072	EFR3072

- Black phenolic or black epoxy work surface with cupsink on right side for Pro Series and NovaGuard fume hoods.
- Cup sinks are located for 18" deep fume hood base cabinets.

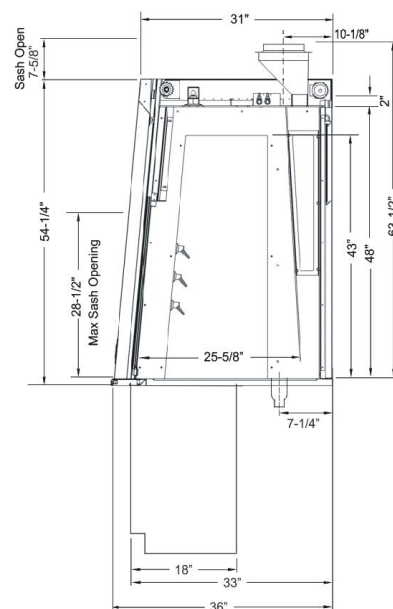
Cup Sink Cover



Black Phenolic	Black Epoxy
PFC0000	EFC0000

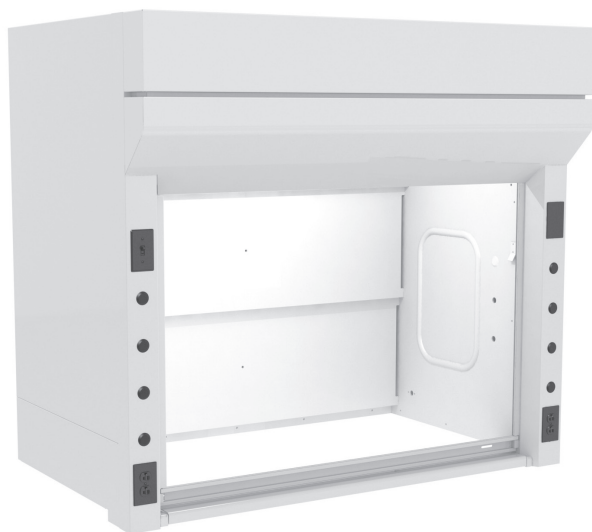
- Black phenolic or black epoxy cup sink cover fits over standard 3" x 6" cup sink.

Side Section Details



SAFEGUARD™ BENCH FUME HOOD - VERTICAL SASH

The SafeGuard™ fume hood was developed to meet the challenging safety, energy conservation, and operational requirements of today's laboratory. Designed for 60-100 feet per minute face velocities, this hood is suitable for use in either Constant Air Volume (CAV) or Variable Air Volume (VAV) requirements. The SafeGuard™ bench mounted fume hood is supplied with the following standard features:



Downflow Upper By-Pass - In CAV configurations, air flows through the downwardly directed by-pass preventing contaminated air build up behind the closed sash.

Chain Drive Sash - Chain and sprocket mechanism that delivers the easiest and most reliable sash operation available with an exceptionally long life span.

Exhaust System - Restricted upper by-pass is optional for VAV use.

Fixed Baffle Area - The baffle system needs no adjustment and improves airflow through the fume hood.

Full Viewing Sash - Provides a clear and unobstructed side to side view of fume hood interior, with a 34" high viewing area. Hoods are supplied with a vertical rising sash and rear mounted visor.

Self-Lowering Sash System - Sash latch temporarily secures the sash in the full open position for setup and tear down operations. When the lock is freed, the sash automatically returns to the 18" open operational position offering extra protection to the operator and helps reduce energy consumption. Below 18", sash is equally balanced.

Flush Airfoil - Low-profile, hinged, type 316 powder coated stainless steel airfoil is flush with the work surface to provide ergonomic and unobstructed access to the interior. The integral spill trough is designed to provide secondary containment in the event a spill escapes the primary containment work top. Power cords can be run through the sill to the electrical outlets on the hood posts.

Spill Trough - Designed to provide secondary containment in the event a spill escapes the primary containment work top.

Electrical - Two UL/CSA approved duplex receptacles provided for 120 volt service. Built-in LED lighting and a corner post mounted UL/CSA approved switch provided.

Plumbing - Front post is pre-punched to accept four fixtures per side. Factory pre-plumbing is available as well as plumbing fixtures from a variety of manufacturers to meet most plumbing needs.

Access Panels - Front and side panels are easily removed to access interior electrical or plumbing fixtures. Interior gasketed access panels provide convenient access and prevent fume leakage outside the hood chamber.

Stainless Steel Exhaust Collar - Wide round exhaust duct connection improves airflow distribution across the hood width.

Approvals & ASHRAE - UL 1805 Classified. Meets all ASHRAE 110 Standards; test results available upon request.

32-5/8" Vertical Raising Sash (Chain & Sprocket Sash System)

Width	Item Number
48"	7271040
60"	7371040
72"	7471040

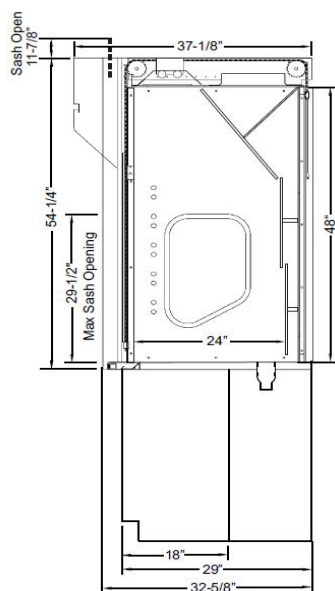
SAFEGUARD™ BENCH FUME HOOD - VERTICAL SASH

Exhaust Parameters

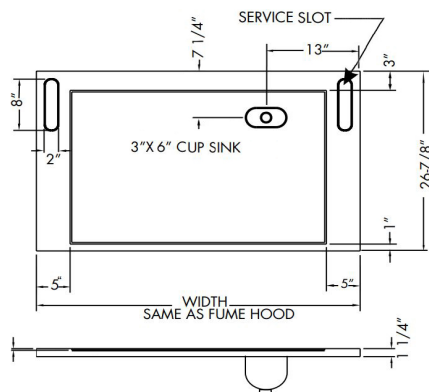
Hood Size	Duct Diameter	100 FPM 18" Max Sash Opening		80 FPM 18" Max Sash Opening		60 FPM 29-1/2" Max* Sash Opening	
		CFM	SP	CFM	SP	CFM	SP
48"	10"	481	0.08	385	0.05	481	0.08
60"	12"	631	0.07	505	0.04	631	0.07
72"	12"	781	0.10	625	0.06	781	0.10

* 28-1/2" max sash opening is recommended for set-up and tear down only.

Side Section Details



SafeGuard™ Work Surfaces



Cup Sink Cover



Black Phenolic Black Epoxy

PFC0000

- Black phenolic or black epoxy cup sink cover fits over standard 3" x 6" cup sink.

Width	Black Phenolic	Black Epoxy
48"	SPR2748	SFR2748
60"	SPR2760	SFR2760
72"	SPR2772	SFR2772

- Black phenolic or black epoxy work surface with cupsink on right side for Pro Series and NovaGuard fume hoods.
- Cup sinks are located for 18" deep fume hood base cabinets.

PRO CONSTANT VOLUME BENCH FUME HOOD - VERTICAL SASH

This general purpose fume hood is designed to meet most laboratory Constant Air Volume (CAV) or Variable Air Volume (VAV) requirements and supplied with an automatic compensating upper by-pass. For VAV, use option S2 for a restricted by-pass plate. Designed to mount on a 30" deep counter top. The Pro bench mounted fume hood is supplied with the following standard features:



Counterbalance Systems - Chain and sprocket system delivers the easiest and most reliable sash operation available with an exceptionally long life span. High quality stainless steel cable system provides economical and reliable operation; tested to 100,000 cycles with no failure.

Stainless Steel Airfoil - Aerodynamic raised design allows air to enter the fume hood even when the sash is closed ensuring efficient fume exhaust. Notches in both corners allow electrical wiring or tubing into the fume hood while still permitting full closure of the sash.

Sash Design - 6mm laminated safety glass is provided with a stainless steel handle and side runners, optional tempered glass or polycarbonate available for special applications. Hood has a vertical sash. 30" viewing height.

Stainless Steel Type 316 Exhaust Collar - Round collar with radiused corners allows for direct connection to exhaust duct to reduce duct transition costs, minimize static pressure losses and exhaust noise levels.

Electrical - Two UL/CSA approved duplex receptacles provided for 120 volt service, one on each corner post. Built-in LED lighting and a corner post mounted UL/CSA approved switch provided.

Plumbing - Both corner posts are pre-punched to accept a maximum of five plumbing fittings per post. Factory pre-plumbing is available as well as plumbing fixtures from a variety of manufacturers to meet most plumbing needs.

Access Panels - Interior gasketed access panels provide convenient access and prevent fume leakage outside the hood chamber. Exterior side panels are also removable for ease of access to plumbing and electrical service fixtures.

Agency Approvals - UL 1805 Classified, CSA certified to UL 61010 and tested in accordance with ASHRAE 110. Test results available upon request.

Vertical Raising Sash (Cable Sash System)

Width	Item Number
48"	7221000
60"	7321000
72"	7421000

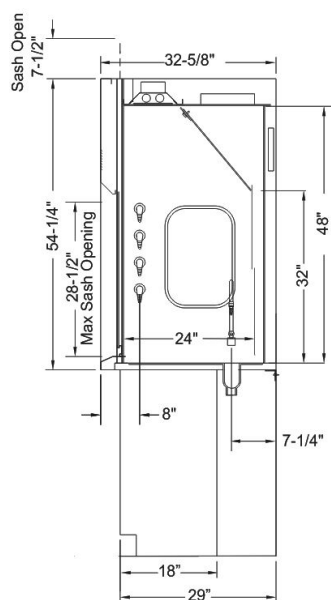
PRO CONSTANT VOLUME BENCH FUME HOOD - VERTICAL SASH

Exhaust Parameters

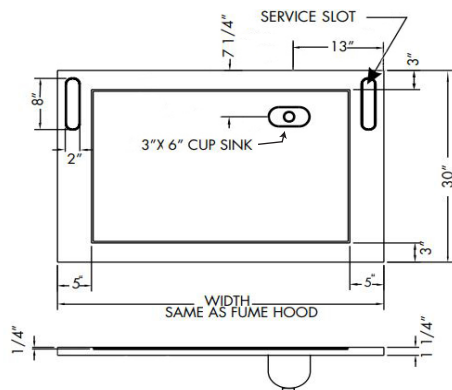
Hood Size	Duct Diameter	100 FPM 18" Max Sash Opening		100 FPM 28-1/2" Max*		80 FPM 18" Max Sash Opening		80 FPM 28-1/2" Max*	
		CFM	SP	CFM	SP	CFM	SP	CFM	SP
48"	10"	508	0.09	789	0.20	407	0.06	630	0.16
60"	12"	667	0.07	1035	0.20	533	0.05	830	0.15
72"	12"	825	0.11	1280	0.25	660	0.07	1025	0.20

* 28-1/2" max sash opening is recommended for set-up and tear down only

Side Section Details



Pro Series Work Surfaces



Cup Sink Cover



Black Phenolic	Black Epoxy
PFC0000	EFC0000

- Black phenolic or black epoxy cup sink cover fits over standard 3" x 6" cup sink.

Width	Black Phenolic	Black Epoxy
48"	PFR3048	EFR3048
60"	PFR3060	EFR3060
72"	PFR3072	EFR3072

- Black phenolic or black epoxy work surface with cupsink on right side for Pro Series and NovaGuard fume hoods.
- Cup sinks are located for 18" deep fume hood base cabinets.

FUME HOOD ACCESSORIES

WaterSaver Front Load Assembly Fixtures



Copper Tubing Black Pipe

PIPE001

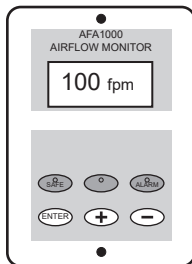
- 6' copper tubing with compression fittings.
- 6' black piping with 90° elbows.
- Copper tubing and black pipe ships loose.

PIPE0002

Service	Color	Item Number
AIR	ORANGE	WSF1001
GAS	BLUE	WSF1002
GAS WITH CHECK VALVE	BLUE	WSF1003
VAC	YELLOW	WSF1004
CW RIGID/SWING GOOSENECK	GREEN	WSF1008
CW RIGID/SWING GOOSENECK IN-LINE VB	GREEN	WSF1009

- Assemblies include front load valves with color coded nylon handles and outlet fitting.
- Piping not included.
- Can be plumbed up or down in the field.
- Air, Gas, Gas with internal check valve and Vac: panel mounted with 45° angle hose end.
- C.G.A. and A.G.A. approved for gas.
- WSF1008: Wall mounted 6" rigid swing gooseneck complete with serrated tip (L9RS).
- These fixture assemblies will ship loose for field installation.
- WFS1009: Wall mounted 6" rigid swing gooseneck complete with serrated tip and in-line vacuum breaker (L9RSVB).
- These fixture assemblies will ship loose for field installation.

Audio/Visual Fume Hood Alarm



Item Number

ALARM04

- The fume hood velocity alarm is used to make sure that the face velocity does not drop below an unsafe level.
- Digital display of face velocity.